

# TFEIP for Newcomers



TFEIP co-chairs: Chris Dore, Martin Adams and Kristina Saarinen

# TFEIP2020 Workshop Agenda



**Monday 11:30 – 13:00**

**What is the TFEIP?**

**How does our work fit within the CLRTAP?**

**The EMEP/EEA Guidebook**

**Annual reporting to the CLRTAP**

**Country perspectives – input from newcomers**

**TFEIP Co-Chairs with  
additional presenters &  
speakers**

**Managing a national emissions inventory**

**Calculating emissions**

**Solutions to common challenges**

**Quality in emission inventories**

**Practical QA/QC**

**Interactive sessions**

# 1. Who comes to the the TFEIP?



## 2. What does the TFEIP do?



### Standing Items

- **Focal point** for technical discussions on AQ emissions inventories
- **Co-ordinate communications** with the AP emissions inventory community
- **Support Parties** within the CLRTAP
- **Contribute** to other Task Force initiatives

## 2. What does the TFEIP do?



### Topical Items

- Updating reporting guidelines
- Contributions to new science initiatives
- inventory community

### Done through...

- **TFEIP Annual Meeting & Workshop**
- **EMEP/EEA AP Emissions Inventory Guidebook**

# 3. How does the TFEIP work?



**TFEIP Annual meeting** - the main gathering of AQ emissions inventory technical experts

- TFEIP Workshop
- Emissions Inventory & CLRTAP News
- Expert Panels (usually parallel sessions)
  - **Combustion & Industry EP**
  - **Transport (& mobile machinery) EP**
  - **Agriculture & Nature EP**
  - **Projections EP**
- New Science & EIONET
- Decisions & Close

# 4. How does our work fit in CLRTAP?



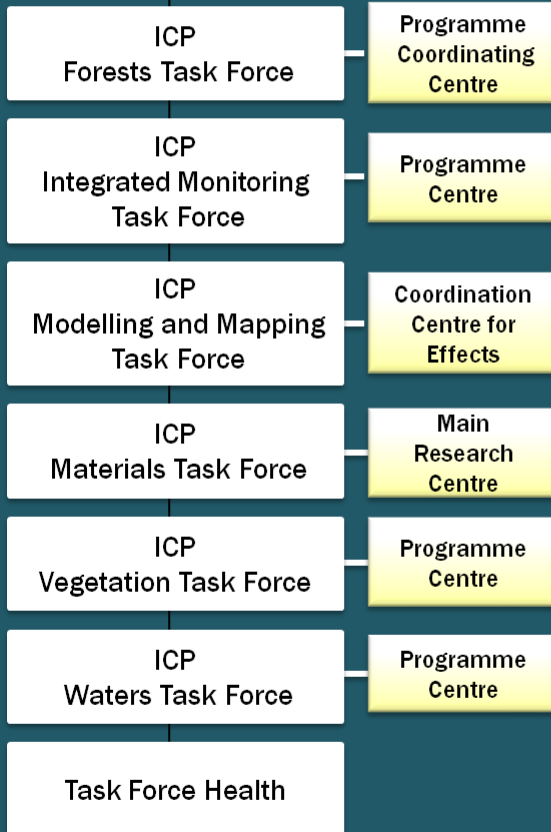
## Task Forces & Centres

- We are one of many different Task Forces/Centres in the CLRTAP... but we are biggest! 😊
- TFs – **science & development** (no EMEP funding)
- Centres – “regular” work programme (EMEP funds)
- Task Forces & Centres are typically “paired”... there is a CEIP
- We report to the “EMEP Steering Body” (science)
- ... who report to the “CLRTAP Executive Body”

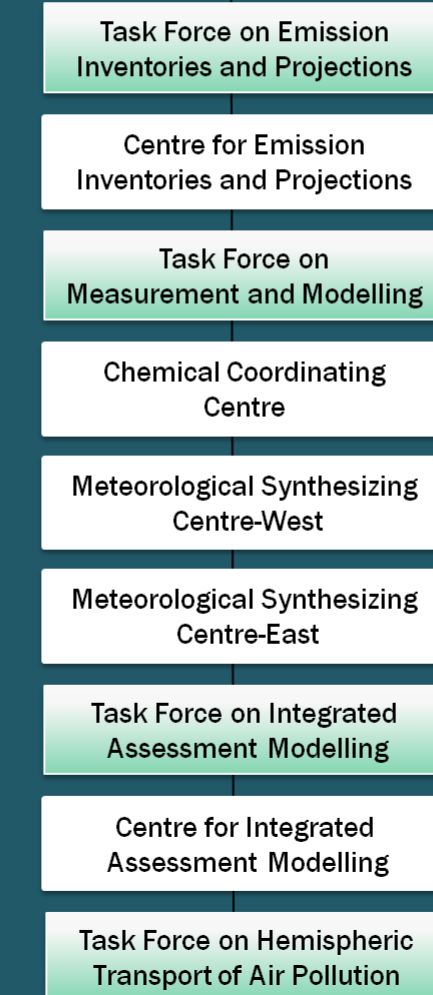
# EXECUTIVE BODY

# IMPLEMENTATION COMMITTEE

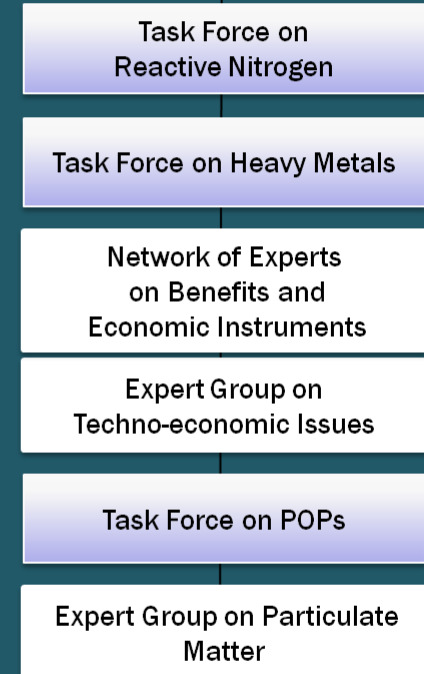
## WG EFFECTS



## EMEP



## WG STRATEGIES AND REVIEW





# 5. Annual Reporting to the CLRTAP



- **Commitments are explained in Reporting GLs**
  - There are different “Protcols” within the Convention
- **Annual emissions inventory**
  - Sent to CEIP
  - National emissions inventory in NFR format (**15<sup>th</sup> Feb**)
    - Up to year x-2, NO<sub>x</sub>, SO<sub>2</sub>, NMVOC, NH<sub>3</sub>, PM<sub>2.5</sub>, PM<sub>10</sub>, CO, HMs, POPs
  - IIR – informative inventory report (**15<sup>th</sup> March**)
- **Other Reporting (every 4 years)**
  - Projections
  - Gridded emissions & Large point sources

# Questions & Discussion

