

# Improving QA/QC feedback on NEC Directive reporting obligations

# Reporting obligation under NECD

**A. Emission Inventories**

**B. IIR**

**C. Adjustments**

**D. National gridded data of emissions**

**E. Large point sources**

**F. Projections**

**G. National Air Pollution Control Programmes**

**H. Policies and Measures**

**I. Network of impact monitoring sites**

**J. Monitoring of air pollutants impact**

# QA/QC goals

- **Improve** sending feedback to Member States
- **Facilitate** resubmissions process
- **Support** NECD Review process
- Shorten publication process of NECD related products

# Reporting recommendations

- Good practices to avoid simple errors
- **Some examples:**
  - Country code: missing or wrong format
  - Date: missing or wrong format
  - Sheet name: creative renaming

ANNEX 1: National sector emissions: Main pollutants, particulate matter		
NFR 2014-2		
COUNTRY:		(as ISO2 code)
DATE:		(as DD.MM.YYYY)
YEAR:		(as YYYY, year of emissions and activity data)
Version:		(as v1.0 for the initial submission)

## Reporting recommendations for submissions under NECD and LRTAP

The present document is meant to help Member States reporting their NECD/LRTAP files in the most efficient way. This is a short list of very simple rules that entail no additional work, but simplify the job of performing QA/QC on submitted data. Most of them concern naming of files and columns, or filling in key cells in worksheet headers.

### 1 Inventory and adjustment data

#### Obligations

Data to be submitted under NECD

- Emission inventory should be submitted under obligation: <https://rod.eionet.europa.eu/obligations/748>
- Adjustment should be submitted under obligation: <https://rod.eionet.europa.eu/obligations/771>

Data to be submitted under LRTAP

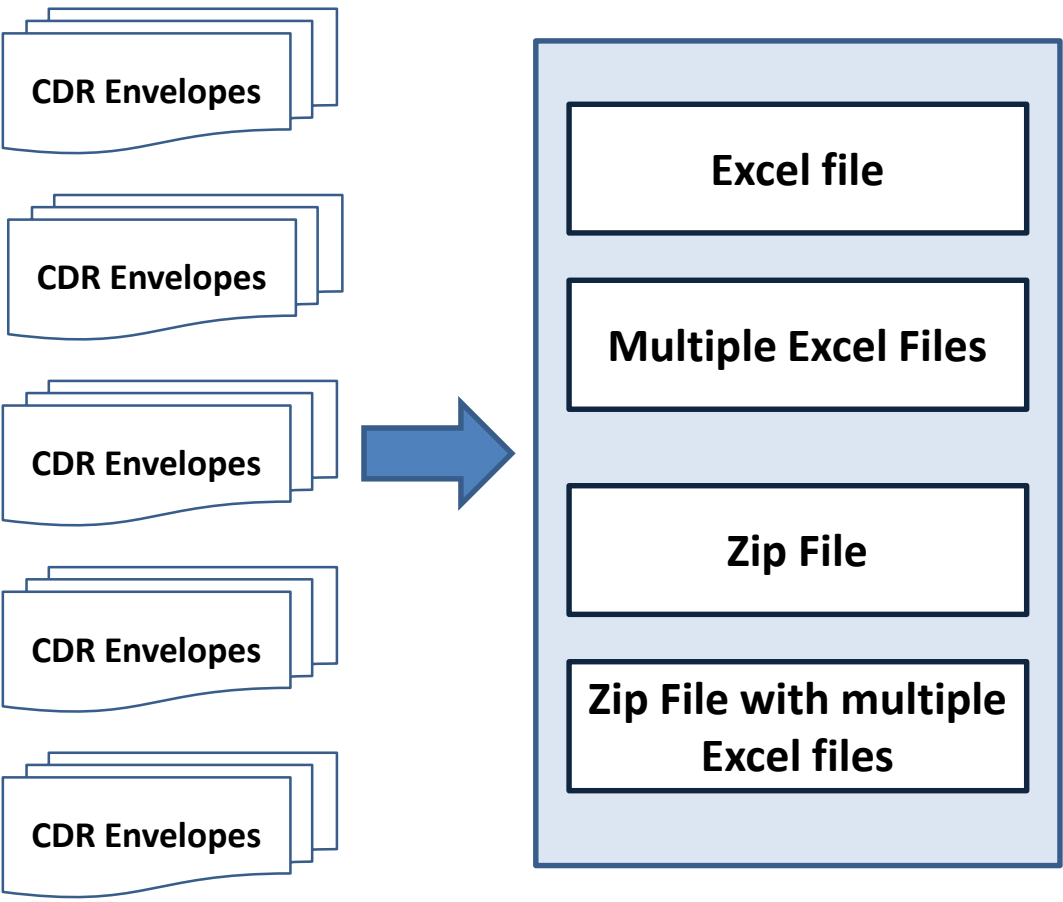
- Inventory data for LRTAP should be submitted under obligation: <https://rod.eionet.europa.eu/obligations/357>
- Adjustment should be submitted under obligation: <https://rod.eionet.europa.eu/obligations/773>

#### Files

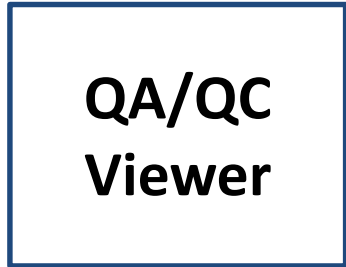
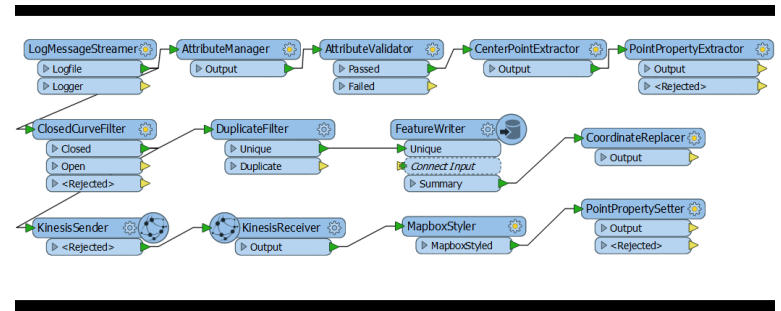
- The system will harvest Member State's Excel files, including .xls and .xlsx.
- Zipped files of those types will also be processed. A zip may contain multiple files.
- A zip file may contain inventory files only, adjustment files only or both inventory and adjustment files.
- Inventory files must contain the text 'annex\_i' in the file name. The use of capital or small letters is allowed.
- Proposed adjustment files must contain the text 'annex\_j' in the file name. The use of capital or small letters is allowed. Approved adjustment files must contain the text 'annex\_ul' in the file name. The use of capital or small letters is allowed.
- The inventory file contains:
  - All inventory files should follow the structure provided by the template.
- No other worksheets should be included in the file (e.g.: adjustment file). In particular:
  - o The sample template worksheet should be removed or filled in (e.g.: no empty worksheet).
  - o Auxiliary sheets used for calculations or internal notes should be removed.
- Worksheets should respect the provided format:
  - o No extra rows should be added or removed before memo items.
  - o No columns should be added or removed.
  - o Data should only be typed in the headers (B4-B7), the NFR area (E14-AL144) and the memo-item area (E148:ALxxx).
- Worksheet headers must be properly filled in:
  - o All four fields should be filled in (Country, Date, Year, Version)

# Building a QA/QC viewer

## Different options



## FME Process



# QA/QC content

- List of checks provide immediate feedback on submissions
- Time series completeness
- PAHs checks
- TSP/PM10/PM2.5 checks
- Notation keys analysis
- Graphic support

# QA/QC Reporting Overview

Reporting Overview | National totals | PAH | TSP-PM-BC | TSP-PM Rates | TSP-PM Graph | NE Analysis | NA NO Checks | Inventory DB | Time series | Time series Activity Data | Excel sources | Files released

Reporting overview. This includes adjustment reports

Reporting Year

affects the whole report

2019

Member state	Submission Date	resubmission	Resubmission	Annex II Submitted	Annex VII Submitted	Weblink	Main Pollutants	Particulate Matter	Priority Heavy Metals	Additional Heavy Metals	POPs	Activity Data
Austria	14.2.2019	15.3.2019	yes	no	no	<a href="http://cdr.eionet.europa.eu">http://cdr.eionet.europa.eu</a>	1990-2017	1990, 1995, 2000-2017	1990-2017		1990-2017	1990-2017
Belgium	15.2.2019	15.3.2019	yes	no	no	<a href="http://cdr.eionet.europa.eu">http://cdr.eionet.europa.eu</a>	1990-2017	2000-2017	1990-2017	1990-2017	1990-2017	
Bulgaria	15.2.2019		no	no	no	<a href="http://cdr.eionet.europa.eu">http://cdr.eionet.europa.eu</a>	1990-2017	1990-2017	1990-2017	1990-2017	1990-2017	
Croatia	16.2.2019	15.3.2019	yes	no	no	<a href="http://cdr.eionet.europa.eu">http://cdr.eionet.europa.eu</a>	1990-2017	1990-2017	1990-2017	1990-2017	1990-2017	1990-2017
Cyprus	15.2.2019	15.3.2019	yes	no	no	<a href="http://cdr.eionet.europa.eu">http://cdr.eionet.europa.eu</a>	1990-2017	2000-2017	1990-2017	1990-2017	1990-2017	
Czechia	16.2.2019	15.3.2019	yes	no	no	<a href="http://cdr.eionet.europa.eu">http://cdr.eionet.europa.eu</a>	1990-2017	1990-2017	1990-2017	1990-2017	1990-2017	
Denmark	15.2.2019		no	no	no	<a href="http://cdr.eionet.europa.eu">http://cdr.eionet.europa.eu</a>	1980-2017	1980-2017	1980-2017	1980-2017	1980-2017	1980-2017
Estonia	13.2.2019	13.3.2019	yes	no	no	<a href="http://cdr.eionet.europa.eu">http://cdr.eionet.europa.eu</a>	1990-2017	2000-2017	1990-2017	1990-2017	1990-2017	
Finland	15.2.2019	13.3.2019	yes	no	yes	<a href="http://cdr.eionet.europa.eu">http://cdr.eionet.europa.eu</a>	1990-2000, 2002-2017	1990-2000, 2002-2017	1990-2000, 2002-2017		1990-2000, 2002-2017	1990-2000, 2002-2017
France	15.2.2019	15.2.2019	yes	no	no	<a href="http://cdr.eionet.europa.eu">http://cdr.eionet.europa.eu</a>	1980-2017	1980-2017	1980-2017	1980-2017	1980-2017	
Germany	12.2.2019	12.3.2019	yes	no	no	<a href="http://cdr.eionet.europa.eu">http://cdr.eionet.europa.eu</a>	1990-2017	1995-2017	1990-2017	1990-2017	1990-2017	
Greece				no	no							
Hungary	18.2.2019	18.3.2019	yes	no	no	<a href="http://cdr.eionet.europa.eu">http://cdr.eionet.europa.eu</a>	1990-2017	2000-2017	1990-2017	1990-2017	1990-2017	1990-2017
Ireland	15.2.2019		no	no	no	<a href="http://cdr.eionet.europa.eu">http://cdr.eionet.europa.eu</a>	1987, 1990-2017	1990-2017	1990-2017	1990-2017	1990-2017	2011-2017
Italy	1.3.2019	14.3.2019	yes	no	no	<a href="http://cdr.eionet.europa.eu">http://cdr.eionet.europa.eu</a>	1990-2016	1990-2016	1990-2016	1990-2016	1990-2016	
Latvia	15.2.2019	15.3.2019	yes	no	no	<a href="http://cdr.eionet.europa.eu">http://cdr.eionet.europa.eu</a>	1990-2017	1990-2017	1990-2017	1990-2017	1990-2017	1990-2017
Lithuania	14.2.2019	15.2.2019	yes	no	no	<a href="http://cdr.eionet.europa.eu">http://cdr.eionet.europa.eu</a>	1990-2017	1990-2017	1990-2017	1990-2017	1990-2017	1990-2017
Luxembourg	16.2.2019	26.3.2019	yes	no	no	<a href="http://cdr.eionet.europa.eu">http://cdr.eionet.europa.eu</a>	1990-2017	1990-2017	1990-2017		1990-2017	1990-2017
Malta	18.2.2019		no	no	no	<a href="http://cdr.eionet.europa.eu">http://cdr.eionet.europa.eu</a>	2000-2017	2000-2017	2000-2017	2000-2017	2000-2017	
Netherlands	14.2.2019	4.4.2019	yes	no	no	<a href="http://cdr.eionet.europa.eu">http://cdr.eionet.europa.eu</a>	1990-2017	1990-2017	1990-2017	1990-2017	1990-2017	1990-2017
Poland	14.2.2019	15.3.2019	yes	no	no	<a href="http://cdr.eionet.europa.eu">http://cdr.eionet.europa.eu</a>	1990-2017	1990-2017	1990-2017		1990-2017	
Portugal	15.2.2019	15.3.2019	yes	no	no	<a href="http://cdr.eionet.europa.eu">http://cdr.eionet.europa.eu</a>	1990-2017	1990-2017	1990-2017	1990-2017	1990-2017	1990-2017
Romania	14.2.2019	15.3.2019	yes	no	no	<a href="http://cdr.eionet.europa.eu">http://cdr.eionet.europa.eu</a>	1995-2017	1995-2017	1995-2017	1995-2017	1995-2017	
Slovakia	15.2.2019	15.3.2019	yes	no	no	<a href="http://cdr.eionet.europa.eu">http://cdr.eionet.europa.eu</a>						
Slovenia	5.2.2019		no	no	no	<a href="http://cdr.eionet.europa.eu">http://cdr.eionet.europa.eu</a>	1990-2017	2000-2017	1990-2017	1990-2017	1990-2017	1990-2017
Spain	13.2.2019		no	no	no	<a href="http://cdr.eionet.europa.eu">http://cdr.eionet.europa.eu</a>	1990-2017	1990-2017	1990-2017	1990-2017	1990-2017	
Sweden	6.2.2019	6.2.2019	yes	no	no	<a href="http://cdr.eionet.europa.eu">http://cdr.eionet.europa.eu</a>	1990-2017	1990-2017	1990-2017	1990-2017	1990-2017	1990-2017
United Kingdom	15.2.2019		no	no	no	<a href="http://cdr.eionet.europa.eu">http://cdr.eionet.europa.eu</a>	1990-2017	1990-2017	1990-2017	1990-2017	1990-2017	1990-2017

# PAHs Check

years	Problem detected	Member state								
		Austria	Belgium	Bulgaria	Finland	Germany	Italy	Malta	Romania	Slovenia
1990	PAH: sum does not match			×		×				
	PAH: total but no parts	×	×		×		×			
1991	PAH: sum does not match			×		×				
	PAH: total but no parts	×	×		×		×			
1992	PAH: sum does not match			×		×				
	PAH: total but no parts	×	×		×		×			
1993	PAH: sum does not match			×		×				
	PAH: total but no parts	×	×		×		×			
1994	PAH: sum does not match			×		×				
	PAH: total but no parts	×	×		×		×			
1995	PAH: sum does not match			×		×			×	
	PAH: total but no parts	×	×		×		×			
1996	PAH: sum does not match			×		×			×	
	PAH: total but no parts	×	×		×		×			
1997	PAH: sum does not match			×		×			×	
	PAH: total but no parts	×	×		×		×			
1998	PAH: sum does not match			×		×			×	
	PAH: total but no parts	×	×		×		×			
1999	PAH: sum does not match			×		×			×	
	PAH: total but no parts	×	×		×		×			
2000	PAH: sum does not match					×			×	
	PAH: total but no parts	×	×		×		×			
2001	PAH: sum does not match					×			×	
	PAH: total but no parts	×	×				×			
2002	PAH: sum does not match					×			×	
	PAH: total but no parts	×	×		×		×			
2003	PAH: sum does not match					×			×	
	PAH: total but no parts	×	×		×		×			
2004	PAH: sum does not match					×			×	
	PAH: total but no parts	×	×		×		×			



# TSP/PM10, PM10/PM2.5 and PM2.5/BC

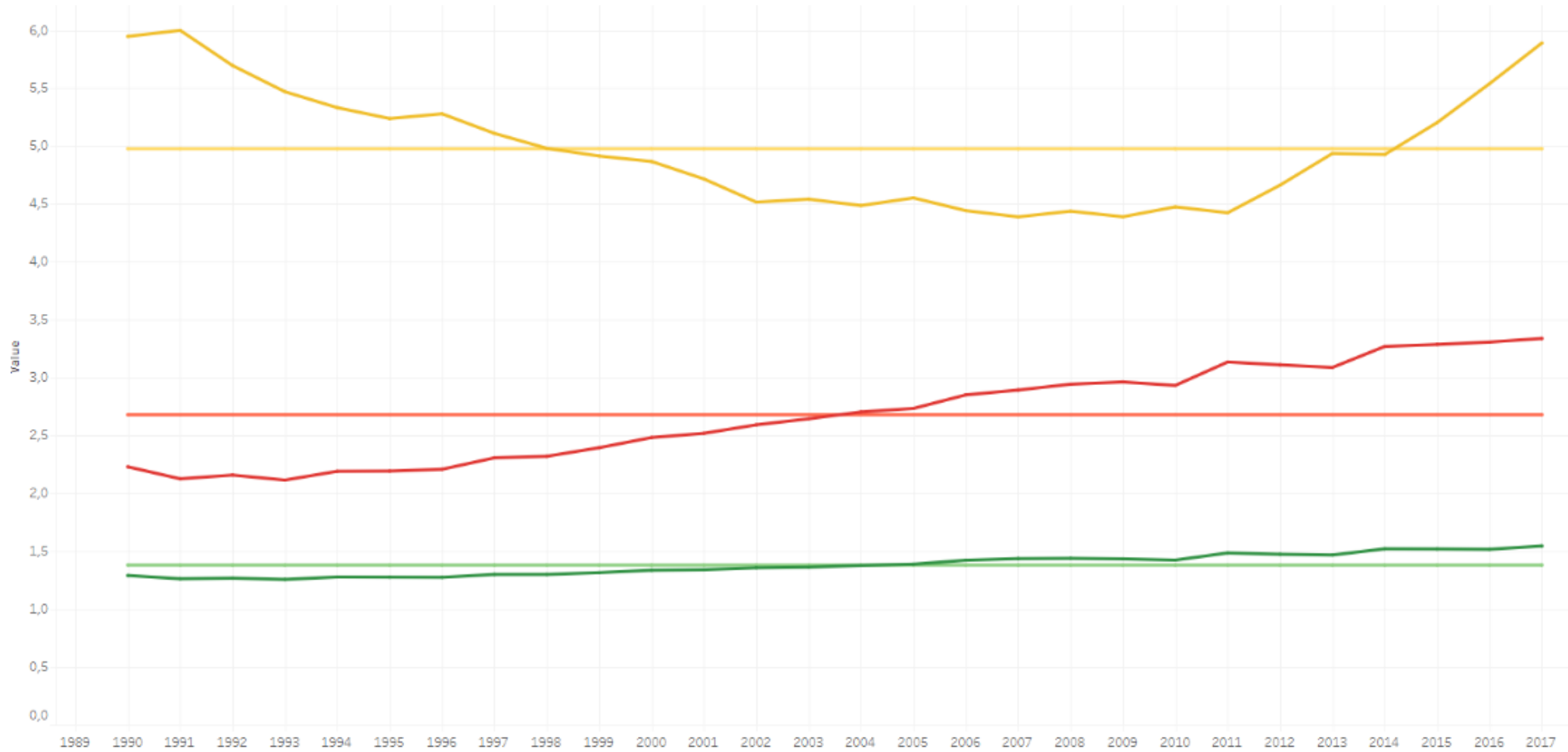
Member state	NFR Code	Problem detected			
		BC>PM2.5	PM2.5>PM10	PM2.5>TSP	
Belgium	1A4ai				
Bulgaria	1A2a			2017	
	1A2d			2014	
Croatia	1A1c			1990, 1991, 1992, 1993, 1994, 1995, 1996, 1997, 1..	
	1A4ai			1990, 1991, 1992, 1994, 1995, 1996, 1997, 1998, 1..	
	1A4ci			1990, 1991, 1992, 1993, 1994, 1995, 1996, 1997, 1..	
	2A1			1990, 1991, 1992, 1993, 1994, 1995, 1996, 1997, 1..	
Denmark	1B1a	1990, 1991, 1992, 1993, 1994, 1995, 1996, 1997, 1..			
Finland	1A2a			2012	
France	1B2c			2017	
Germany	1A2a			2008, 2009, 2012, 2013	
Lithuania	1A1c			1990, 1991, 1992, 1993, 2002, 2004, 2005, 2006, 2..	
	1A3bii	2015			
	1A3dii		1990, 1991, 1992, 1993, 1994, 1995, 1996, 1997, 1..		
	1A4ai		2000, 2001, 2002, 2003, 2004, 2005, 2006, 2007, 2..	2005, 2006, 2007, 2008, 2009, 2010	
	5C1bii	2007, 2008, 2009, 2010, 2015, 2016, 2017			2017
Luxembourg	1A4ai			1990, 1991, 1992, 1993, 1994, 1995, 1996, 1997, 1..	
Malta	1A2gviii	2005, 2006, 2007, 2008, 2009, 2010, 2011, 2012, 2..			
	1A3bi		2001, 2002, 2003	2001, 2002, 2003	
	1A3bii		2000		
	1A3biii		2000, 2001, 2002, 2003, 2004	2000, 2001, 2002, 2003, 2004	
	1A4ai	2005, 2006, 2007, 2008, 2009, 2010, 2011, 2012, 2..			2005, 2006, 2007, 2008, 2009, 2010, 2011, 2012, 2..
	1A4ciii			2010	2010
	3B3				2017
	3B4giv				2015
	5C1biv	2009, 2012, 2013, 2014, 2015, 2016			

# Ratio TSP/PM10, PM10/PM2.5 and PM2.5/BC

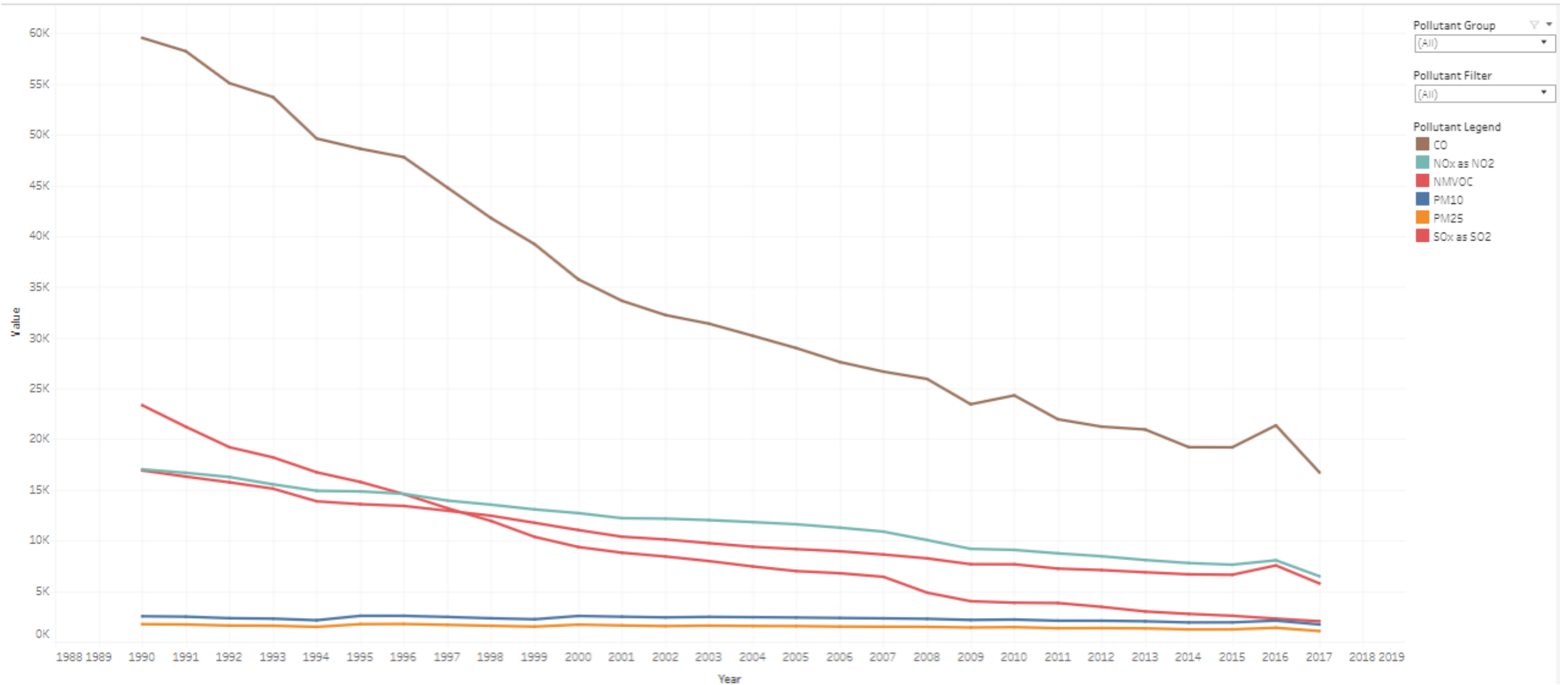
Member state	Average	Deviant ratio	Year																					
			1990	1991	1992	1993	1994	1995	1996	2000	2001	2002	2003	2004	2005	2006	2007	2011	2012	2014	2015	2016	2017	
Belgium	5,38	PM2.5/BC																					7,28	
Bulgaria	9,163	PM2.5/BC					12,52	12,53																
Czechia	9,663	PM2.5/BC	15,64	14,34	13,38	13,60			12,57	13,41														
Estonia	1,567	TSP/PM10									2,19	2,14												
EU28	1,916	TSP/PM10	2,71																					
Germany	5,599	PM2.5/BC																					7,45	
Ireland	5,834	PM2.5/BC	8,04	7,83																				
Italy	5,191	PM2.5/BC																					7,11	
Latvia	1,563	TSP/PM10											2,14								2,05			
Lithuania	1,314	PM10/PM2.5																					1,73	
	3,787	PM2.5/BC	5,57	6,03		4,98																		
Malta	1,768	TSP/PM10								3,26	2,79	2,81	2,90	2,90				1,23	1,23	1,23				
	2,653	PM2.5/BC													3,59	3,66	3,53					1,68	1,64	

Ratio TSP:PM10 and PM10:PM2.5 not consistent  
 The ratios reported deviate more than 30% from the mean for that country

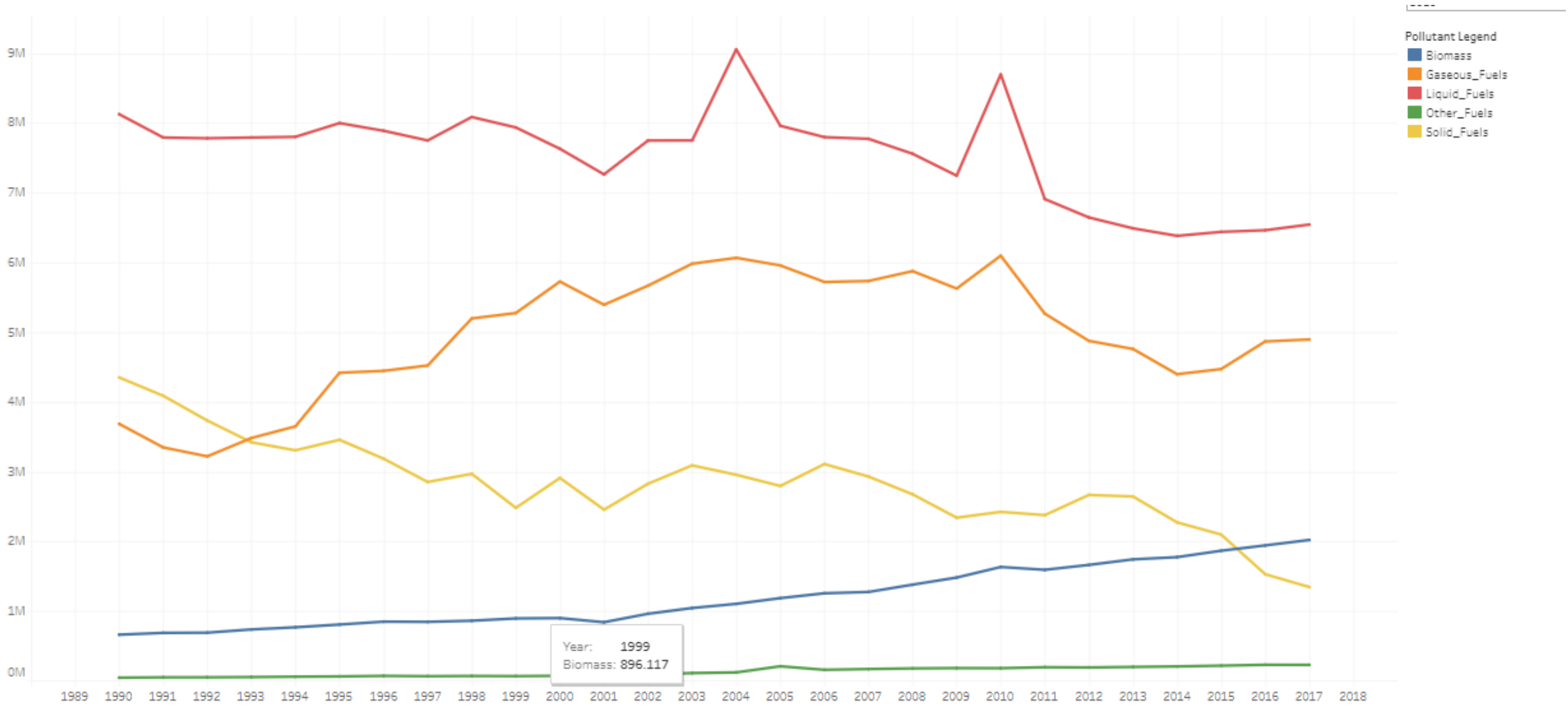
# Ratios for TSP/PM10, PM10/PM2.5 and PM2.5/BC



# Pollutant Timeseries



# Activity Data Timeseries



# Quick access to submissions

2019: Excel files reported by country

Click on a cell and find the "Open excel file" link

Member state	2017	2016	2015	2014	2013	2012	2011	2010	2009
Austria	<a href="http://c..">http://c..</a>	<a href="http://c..">http://c..</a>	<a href="http://c..">http://c..</a>	<a href="http://c..">http://c..</a>	<a href="http://c..">http://c..</a>	<a href="http://c..">http://c..</a>	<a href="http://c..">http://c..</a>	<a href="http://c..">http://c..</a>	<a href="http://c..">http://c..</a>
Belgium	<a href="http://c..">http://c..</a>	<a href="http://c..">http://c..</a>	<a href="http://c..">http://c..</a>	<a href="http://c..">http://c..</a>	<a href="http://c..">http://c..</a>	<a href="http://c..">http://c..</a>	<a href="http://c..">http://c..</a>	<a href="http://c..">http://c..</a>	<a href="http://c..">http://c..</a>
Bulgaria	<a href="http://c..">http://c..</a>	<a href="http://c..">http://c..</a>	<a href="http://c..">http://c..</a>	<a href="http://c..">http://c..</a>	<a href="http://c..">http://c..</a>	<a href="http://c..">http://c..</a>	<a href="http://c..">http://c..</a>	<a href="http://c..">http://c..</a>	<a href="http://c..">http://c..</a>
Croatia	<a href="http://c..">http://c..</a>	<a href="http://c..">http://c..</a>	<a href="http://c..">http://c..</a>	<a href="http://c..">http://c..</a>	<a href="http://c..">http://c..</a>	<a href="http://c..">http://c..</a>	<a href="http://c..">http://c..</a>	<a href="http://c..">http://c..</a>	<a href="http://c..">http://c..</a>
Cyprus	<a href="http://c..">http://c..</a>	<a href="http://c..">http://c..</a>	<a href="http://c..">http://c..</a>	<a href="http://c..">http://c..</a>	<a href="http://c..">http://c..</a>	<a href="http://c..">http://c..</a>	<a href="http://c..">http://c..</a>	<a href="http://c..">http://c..</a>	<a href="http://c..">http://c..</a>
Czechia	<a href="http://c..">http://c..</a>	<a href="http://c..">http://c..</a>	<a href="http://c..">http://c..</a>	<a href="http://c..">http://c..</a>	<a href="http://c..">http://c..</a>	<a href="http://c..">http://c..</a>	<a href="http://c..">http://c..</a>	<a href="http://c..">http://c..</a>	<a href="http://c..">http://c..</a>
Denmark	<a href="http://c..">http://c..</a>	<a href="http://c..">http://c..</a>	<a href="http://c..">http://c..</a>	<a href="http://c..">http://c..</a>	<a href="http://c..">http://c..</a>	<a href="http://c..">http://c..</a>	<a href="http://c..">http://c..</a>	<a href="http://c..">http://c..</a>	<a href="http://c..">http://c..</a>
Estonia	<a href="http://c..">http://c..</a>	<a href="http://c..">http://c..</a>	<a href="http://c..">http://c..</a>	<a href="http://c..">http://c..</a>	<a href="http://c..">http://c..</a>	<a href="http://c..">http://c..</a>	<a href="http://c..">http://c..</a>	<a href="http://c..">http://c..</a>	<a href="http://c..">http://c..</a>
Finland	<a href="http://c..">http://c..</a>	<a href="http://c..">http://c..</a>	<a href="http://c..">http://c..</a>	<a href="http://c..">http://c..</a>	<a href="http://c..">http://c..</a>	<a href="http://c..">http://c..</a>	<a href="http://c..">http://c..</a>	<a href="http://c..">http://c..</a>	<a href="http://c..">http://c..</a>
France	<a href="http://c..">http://c..</a>	<a href="http://c..">http://c..</a>	<a href="http://c..">http://c..</a>	<a href="http://c..">http://c..</a>	<a href="http://c..">http://c..</a>	<a href="http://c..">http://c..</a>	<a href="http://c..">http://c..</a>	<a href="http://c..">http://c..</a>	<a href="http://c..">http://c..</a>
Germany	<a href="http://c..">http://c..</a>	<a href="http://c..">http://c..</a>	<a href="http://c..">http://c..</a>	<a href="http://c..">http://c..</a>	<a href="http://c..">http://c..</a>	<a href="http://c..">http://c..</a>	<a href="http://c..">http://c..</a>	<a href="http://c..">http://c..</a>	<a href="http://c..">http://c..</a>
Hungary	<a href="http://c..">http://c..</a>	<a href="http://c..">http://c..</a>	<a href="http://c..">http://c..</a>	<a href="http://c..">http://c..</a>	<a href="http://c..">http://c..</a>	<a href="http://c..">http://c..</a>	<a href="http://c..">http://c..</a>	<a href="http://c..">http://c..</a>	<a href="http://c..">http://c..</a>
Ireland	<a href="http://c..">http://c..</a>	<a href="http://c..">http://c..</a>	<a href="http://c..">http://c..</a>	<a href="http://c..">http://c..</a>	<a href="http://c..">http://c..</a>	<a href="http://c..">http://c..</a>	<a href="http://c..">http://c..</a>	<a href="http://c..">http://c..</a>	<a href="http://c..">http://c..</a>
Italy		<a href="http://c..">http://c..</a>	<a href="http://c..">http://c..</a>	<a href="http://c..">http://c..</a>	<a href="http://c..">http://c..</a>	<a href="http://c..">http://c..</a>	<a href="http://c..">http://c..</a>	<a href="http://c..">http://c..</a>	<a href="http://c..">http://c..</a>
Latvia	<a href="http://c..">http://c..</a>	<a href="http://c..">http://c..</a>	<a href="http://c..">http://c..</a>	<a href="http://c..">http://c..</a>	<a href="http://c..">http://c..</a>	<a href="http://c..">http://c..</a>	<a href="http://c..">http://c..</a>	<a href="http://c..">http://c..</a>	<a href="http://c..">http://c..</a>
Lithuania	<a href="http://c..">http://c..</a>	<a href="http://c..">http://c..</a>	<a href="http://c..">http://c..</a>	<a href="http://c..">http://c..</a>	<a href="http://c..">http://c..</a>	<a href="http://c..">http://c..</a>	<a href="http://c..">http://c..</a>	<a href="http://c..">http://c..</a>	<a href="http://c..">http://c..</a>
Luxembourg	<a href="http://c..">http://c..</a>	<a href="http://c..">http://c..</a>	<a href="http://c..">http://c..</a>	<a href="http://c..">http://c..</a>	<a href="http://c..">http://c..</a>	<a href="http://c..">http://c..</a>	<a href="http://c..">http://c..</a>	<a href="http://c..">http://c..</a>	<a href="http://c..">http://c..</a>
Malta	<a href="http://c..">http://c..</a>	<a href="http://c..">http://c..</a>	<a href="http://c..">http://c..</a>	<a href="http://c..">http://c..</a>	<a href="http://c..">http://c..</a>	<a href="http://c..">http://c..</a>	<a href="http://c..">http://c..</a>	<a href="http://c..">http://c..</a>	<a href="http://c..">http://c..</a>
Netherlands	<a href="http://c..">http://c..</a>	<a href="http://c..">http://c..</a>	<a href="http://c..">http://c..</a>	<a href="http://c..">http://c..</a>	<a href="http://c..">http://c..</a>	<a href="http://c..">http://c..</a>	<a href="http://c..">http://c..</a>	<a href="http://c..">http://c..</a>	<a href="http://c..">http://c..</a>
Poland	<a href="http://c..">http://c..</a>	<a href="http://c..">http://c..</a>	<a href="http://c..">http://c..</a>	<a href="http://c..">http://c..</a>	<a href="http://c..">http://c..</a>	<a href="http://c..">http://c..</a>	<a href="http://c..">http://c..</a>	<a href="http://c..">http://c..</a>	<a href="http://c..">http://c..</a>
Portugal	<a href="http://c..">http://c..</a>	<a href="http://c..">http://c..</a>	<a href="http://c..">http://c..</a>	<a href="http://c..">http://c..</a>	<a href="http://c..">http://c..</a>	<a href="http://c..">http://c..</a>	<a href="http://c..">http://c..</a>	<a href="http://c..">http://c..</a>	<a href="http://c..">http://c..</a>
Romania	<a href="http://c..">http://c..</a>	<a href="http://c..">http://c..</a>	<a href="http://c..">http://c..</a>	<a href="http://c..">http://c..</a>	<a href="http://c..">http://c..</a>	<a href="http://c..">http://c..</a>	<a href="http://c..">http://c..</a>	<a href="http://c..">http://c..</a>	<a href="http://c..">http://c..</a>
Slovenia	<a href="http://c..">http://c..</a>	<a href="http://c..">http://c..</a>	<a href="http://c..">http://c..</a>	<a href="http://c..">http://c..</a>	<a href="http://c..">http://c..</a>	<a href="http://c..">http://c..</a>	<a href="http://c..">http://c..</a>	<a href="http://c..">http://c..</a>	<a href="http://c..">http://c..</a>
Spain	<a href="http://c..">http://c..</a>	<a href="http://c..">http://c..</a>	<a href="http://c..">http://c..</a>	<a href="http://c..">http://c..</a>	<a href="http://c..">http://c..</a>	<a href="http://c..">http://c..</a>	<a href="http://c..">http://c..</a>	<a href="http://c..">http://c..</a>	<a href="http://c..">http://c..</a>
Sweden	<a href="http://c..">http://c..</a>	<a href="http://c..">http://c..</a>	<a href="http://c..">http://c..</a>	<a href="http://c..">http://c..</a>	<a href="http://c..">http://c..</a>	<a href="http://c..">http://c..</a>	<a href="http://c..">http://c..</a>	<a href="http://c..">http://c..</a>	<a href="http://c..">http://c..</a>
United Kingdom	<a href="http://c..">http://c..</a>	<a href="http://c..">http://c..</a>	<a href="http://c..">http://c..</a>	<a href="http://c..">http://c..</a>	<a href="http://c..">http://c..</a>	<a href="http://c..">http://c..</a>	<a href="http://c..">http://c..</a>	<a href="http://c..">http://c..</a>	<a href="http://c..">http://c..</a>

## Access to all the envelopes and their contents

## Summary of reported files by MS

2019: Files released by

FileName	Released	Uploaded	FileUrl	
Denmark_NFR_Report_2019.xls	15.2.2019	12.2.2019	<a href="http://cdr.eione..">http://cdr.eione..</a>	▶
DK-2019-Feb15_Cover_letter_CION.pdf	15.2.2019	15.2.2019	<a href="http://cdr.eione..">http://cdr.eione..</a>	▶
DK-2019-Mar15_Projections_reporting.xls	15.3.2019	15.3.2019	<a href="http://cdr.eione..">http://cdr.eione..</a>	▶

# Projections QA/QC

## National Total Check

- NT=NFR Sum
- NT<>NFR Sum
- Incomplete Reporting
- Not reported

Reporting year				National Total Check																
Reporting year	2019	Country	(All)	Year	(All)	Policy	(All)	WM						WaM						
Country	Year	Country	Year	Country	Year	Country	Year	NOx	NMVOG	SO2	NH3	PM25	BC	NOx	NMVOG	SO2	NH3	PM25	BC	
Austria	2020	Austria	2020	Austria	2020	Austria	2020	■	■	■	■	■	■	■	■	■	■	■	■	■
Belgium	2025	Austria	2025	Austria	2025	Austria	2025	■	■	■	■	■	■	■	■	■	■	■	■	■
Bulgaria	2030	Belgium	2030	Belgium	2030	Belgium	2030	■	■	■	■	■	■	■	■	■	■	■	■	■
Cyprus	2040	Belgium	2040	Belgium	2040	Belgium	2040	■	■	■	■	■	■	■	■	■	■	■	■	■
Czechia	2050	Bulgaria	2050	Bulgaria	2050	Bulgaria	2050	■	■	■	■	■	■	■	■	■	■	■	■	■
Denmark	2020	Belgium	2020	Belgium	2020	Belgium	2020	■	■	■	■	■	■	■	■	■	■	■	■	■
Estonia	2025	Cyprus	2025	Belgium	2025	Belgium	2025	■	■	■	■	■	■	■	■	■	■	■	■	■
Spain	2030	Cyprus	2030	Belgium	2030	Belgium	2030	■	■	■	■	■	■	■	■	■	■	■	■	■
Finland	2040	Czechia	2040	Belgium	2040	Belgium	2040	■	■	■	■	■	■	■	■	■	■	■	■	■
United Kingdom	2050	Czechia	2050	Belgium	2050	Belgium	2050	■	■	■	■	■	■	■	■	■	■	■	■	■
Croatia	2020	Denmark	2020	Bulgaria	2020	Bulgaria	2020	■	■	■	■	■	■	■	■	■	■	■	■	■
Hungary	2025	Denmark	2025	Bulgaria	2025	Bulgaria	2025	■	■	■	■	■	■	■	■	■	■	■	■	■
Ireland	2030	Estonia	2030	Bulgaria	2030	Bulgaria	2030	■	■	■	■	■	■	■	■	■	■	■	■	■
Italy	2040	Estonia	2040	Bulgaria	2040	Bulgaria	2040	■	■	■	■	■	■	■	■	■	■	■	■	■
Lithuania	2050	Spain	2050	Bulgaria	2050	Bulgaria	2050	■	■	■	■	■	■	■	■	■	■	■	■	■
Luxembourg	2020	Spain	2020	Bulgaria	2020	Bulgaria	2020	■	■	■	■	■	■	■	■	■	■	■	■	■
Latvia	2025	Finland	2025	Bulgaria	2025	Bulgaria	2025	■	■	■	■	■	■	■	■	■	■	■	■	■
Netherlands	2030	Finland	2030	Bulgaria	2030	Bulgaria	2030	■	■	■	■	■	■	■	■	■	■	■	■	■
Poland	2040	United Kingdom	2040	Bulgaria	2040	Bulgaria	2040	■	■	■	■	■	■	■	■	■	■	■	■	■
Romania	2050	United Kingdom	2050	Bulgaria	2050	Bulgaria	2050	■	■	■	■	■	■	■	■	■	■	■	■	■
Sweden	2020	Croatia	2020	Croatia	2020	Croatia	2020	■	■	■	■	■	■	■	■	■	■	■	■	■
Slovenia	2025	Croatia	2025	Croatia	2025	Croatia	2025	■	■	■	■	■	■	■	■	■	■	■	■	■
Slovakia	2030	Cyprus	2030	Croatia	2030	Croatia	2030	■	■	■	■	■	■	■	■	■	■	■	■	■
	2040	Cyprus	2040	Croatia	2040	Croatia	2040	■	■	■	■	■	■	■	■	■	■	■	■	■
	2050	Cyprus	2050	Croatia	2050	Croatia	2050	■	■	■	■	■	■	■	■	■	■	■	■	■

- WaM information are not mandatory.  
 - Only the latest release for each country and year is used to collect data

# Reporting obligation under NECD – Next Steps

**A. Emission Inventories**

**B. IIR**

**C. Adjustments**

**D. National gridded data of emissions**

**E. Large point sources**

**F. Projections**

**G. National Air Pollution Control Programmes**

**H. Policies and Measures**

**I. Network of impact monitoring sites**

**J. Monitoring of air pollutants impact**